



SECURITY DOOR CONTROLS ■ WWW.SDCSECURITY.COM
 801 Avenida Acaso, Camarillo, CA 93012
 [t] 800.413.8783 ■ 805.494.0622 ■ E-mail: service@sdsecurity.com

TEMPLATE-S6203-SP03

Devices covered by this template:

**Panic / Fire SVR Exit Device with 03 Night-Latch Pull Plate
 RHR PREP**

THIS SIDE UP FOR RHR DOOR

FOLD HERE
CAUTION
 DO NOT USE DOOR EDGE

(4x) DEVICE MOUNTING HOLES (4th hole shown on Trim Template)
 TRIM: DRILL 5/16" CLEARANCE HOLES ON PUSH SIDE,
 15/32" HOLES ON PULL SIDE.

(2x) END CAP BRACKET HOLES
 METAL: DRILL / TAP FOR 1/4"-20
 MACHINE SCREWS.

WOOD: PRE-DRILL 1/8" HOLES.

SEXBOLTS: DRILL 5/16" CLEARANCE
 HOLES ON PUSH SIDE, 3/8" ON
 PULL SIDE.

5/8" CLEARANCE HOLE FOR RIM CYLINDER.

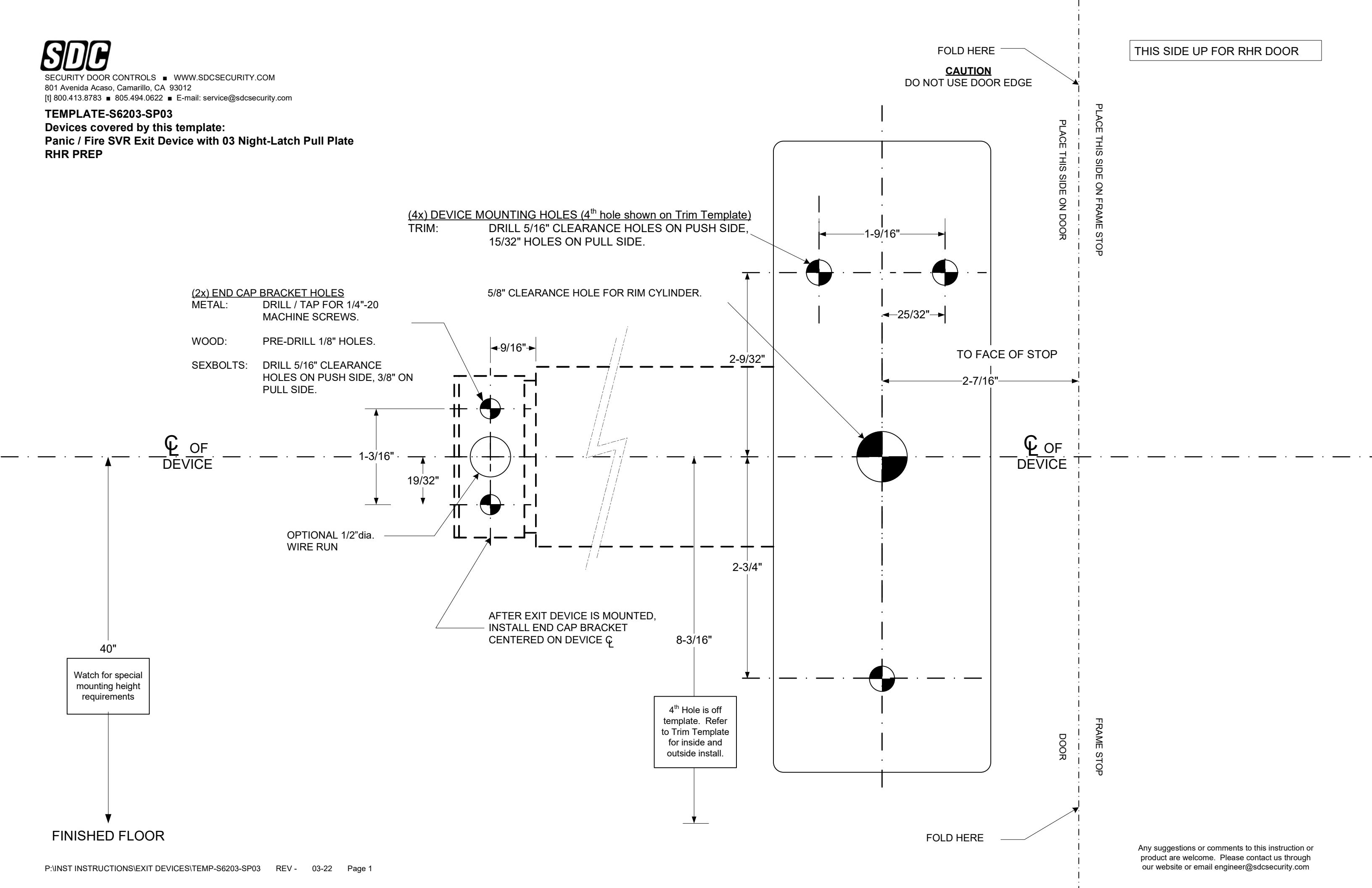
OPTIONAL 1/2" dia.
 WIRE RUN

AFTER EXIT DEVICE IS MOUNTED,
 INSTALL END CAP BRACKET
 CENTERED ON DEVICE C_L

4th Hole is off
 template. Refer
 to Trim Template
 for inside and
 outside install.

Watch for special
 mounting height
 requirements

FINISHED FLOOR



THIS SIDE UP FOR LHR DOOR

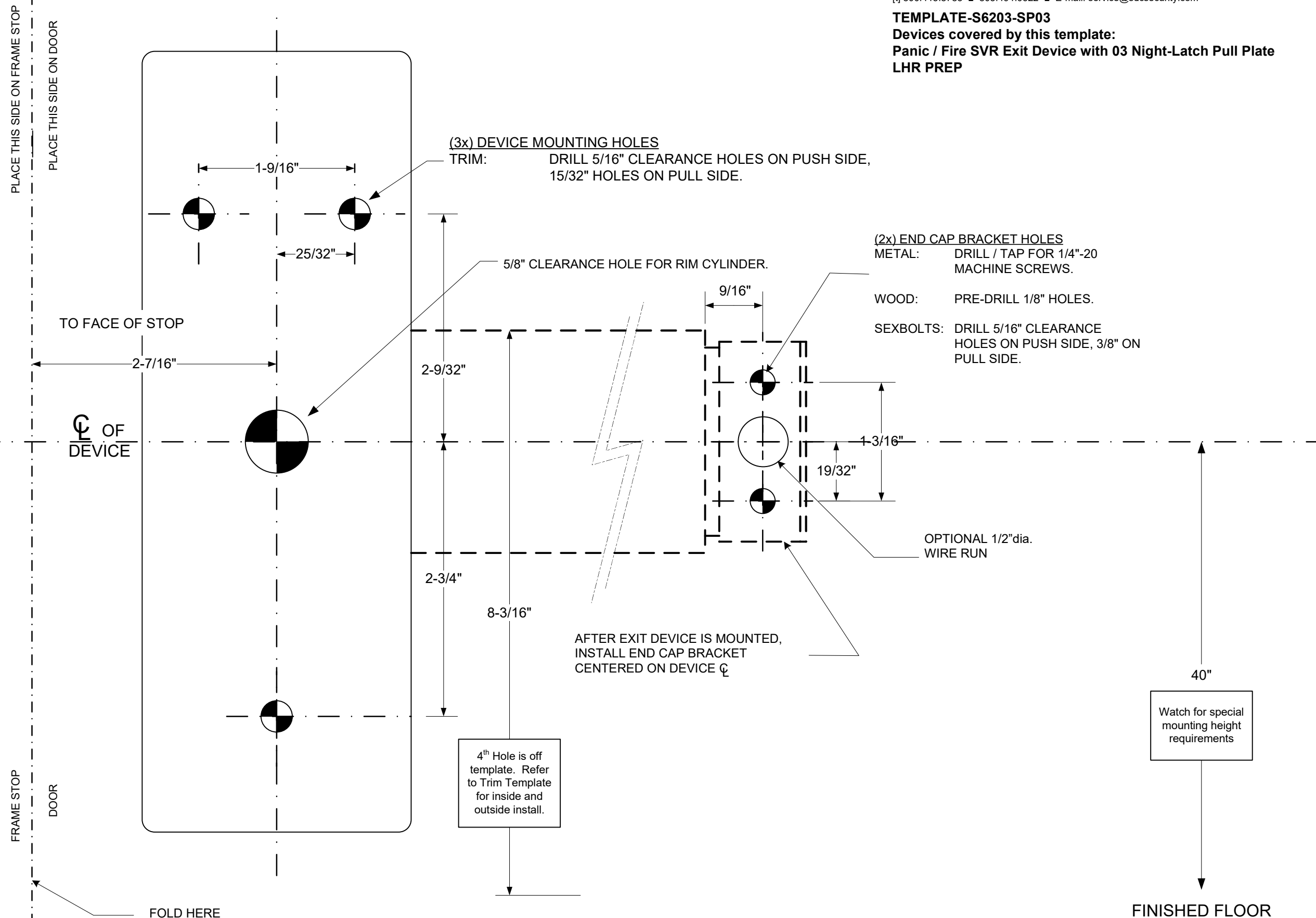
FOLD HERE
CAUTION
DO NOT USE DOOR EDGE



SECURITY DOOR CONTROLS ■ WWW.SDCSECURITY.COM
801 Avenida Acaso, Camarillo, CA 93012
[t] 800.413.8783 ■ 805.494.0622 ■ E-mail: service@sdsecurity.com

TEMPLATE-S6203-SP03

Devices covered by this template:
Panic / Fire SVR Exit Device with 03 Night-Latch Pull Plate
LHR PREP





TOP LATCH TEMPLATE

(3x) Top Strike Holes

METAL: DRILL / TAP FOR 1/4-20
MACHINE SCREWS

WOOD: 1/8" PILOT DRILL

PLACE THIS SIDE ON
TOP FRAME.

PLACE THIS SIDE ON
DOOR SURFACE SIDE

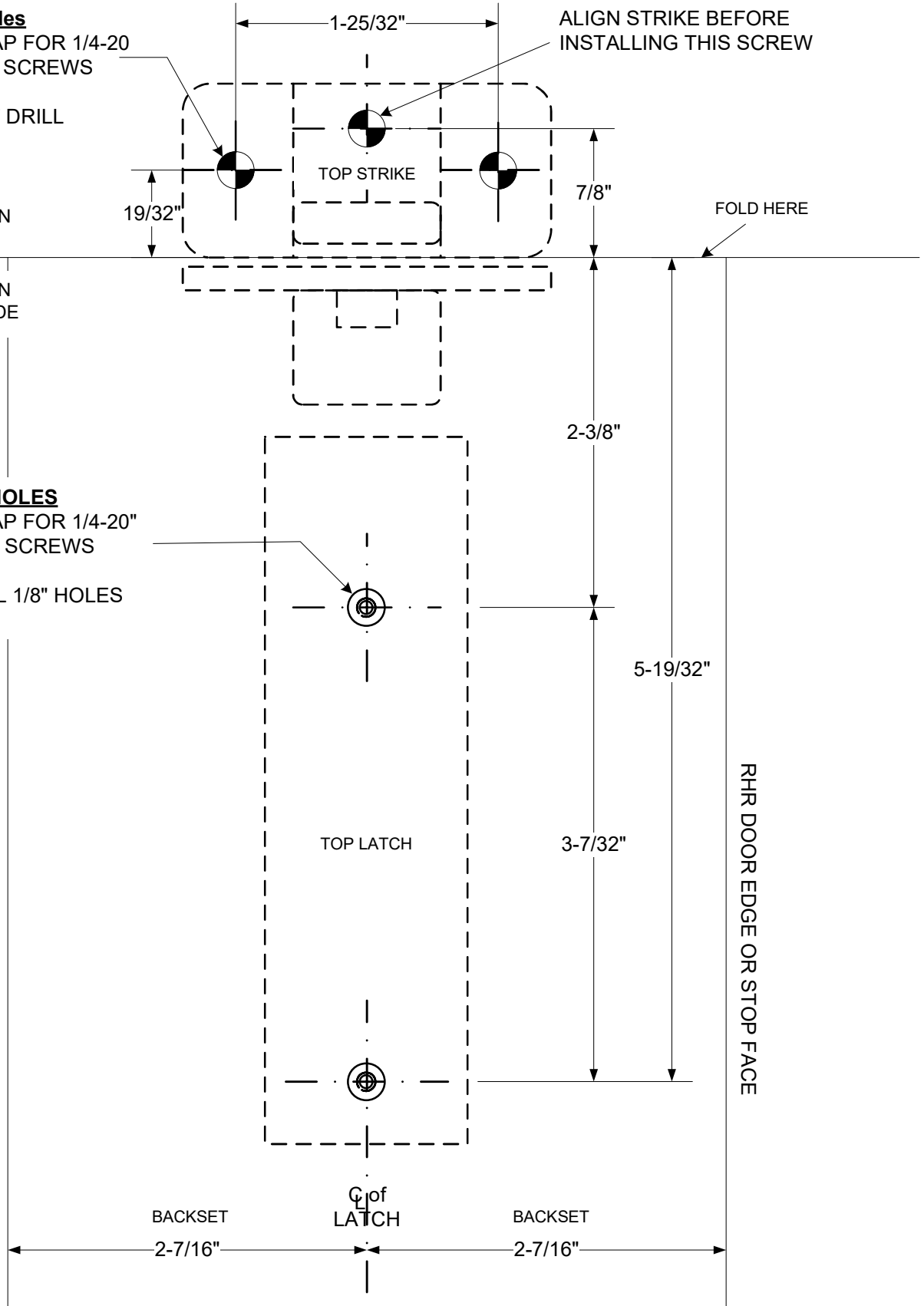
(2x) TOP LATCH HOLES

METAL: DRILL / TAP FOR 1/4-20"
MACHINE SCREWS

WOOD: PRE-DRILL 1/8" HOLES

LHR DOOR EDGE OR STOP FACE

RHR DOOR EDGE OR STOP FACE



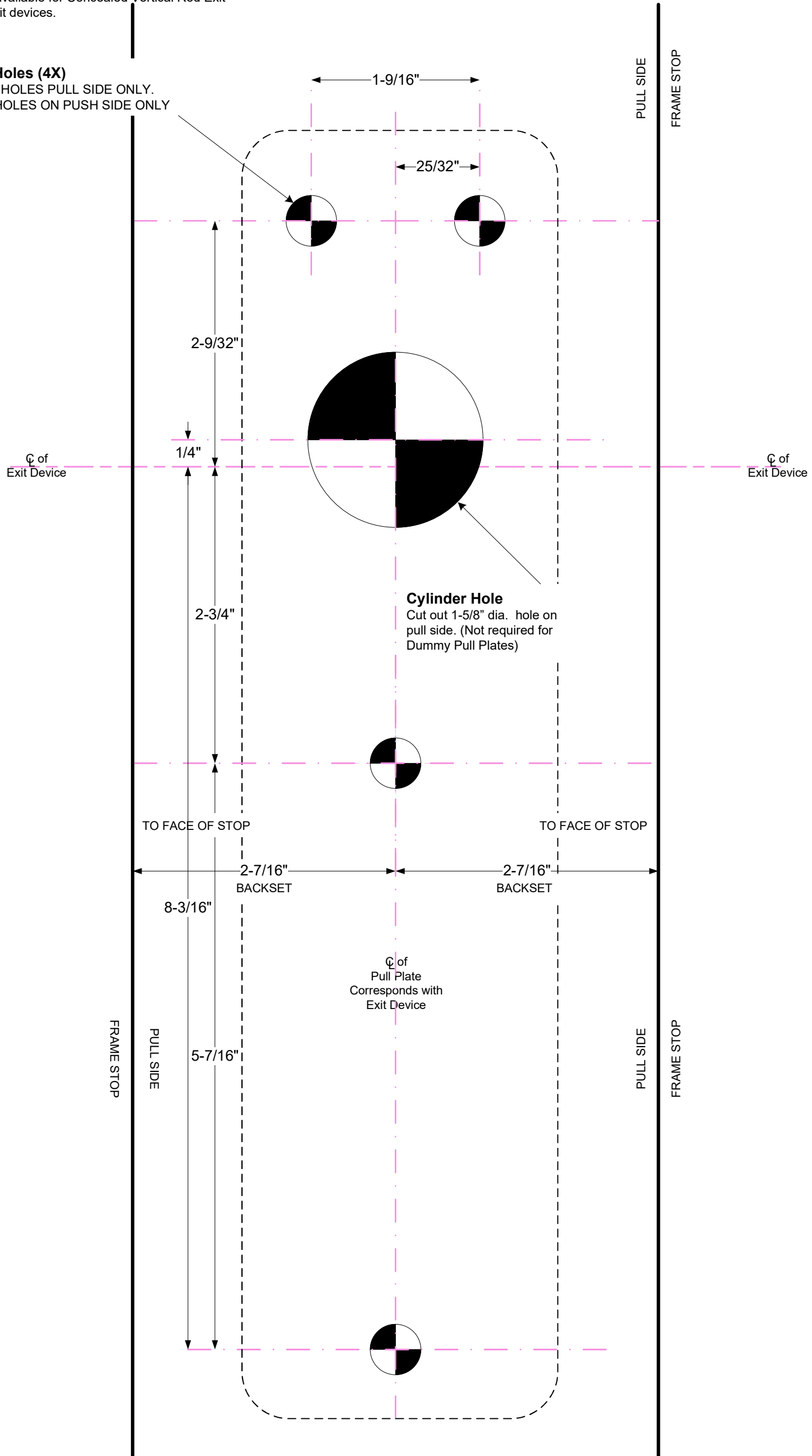
TEMPLATE

**TEMP-SP03
SATURN ESCUTCHEON 03 NIGHT LATCH PULL PLATE**

Note;
This template is used for Rim Mount and Surface Mount Vertical Rod Devices. It is not available for Concealed Vertical Rod Exit Devices and Mortise exit devices.

CAUTION
DO NOT USE DOOR EDGE

Mounting Holes (4X)
DRILL 15/32" HOLES PULL SIDE ONLY.
DRILL 5/16" HOLES ON PUSH SIDE ONLY





BOTTOM LATCH TEMPLATE

(NOT REQUIRED FOR LBR DEVICE)

