



SECURITY DOOR CONTROLS ■ WWW.SDCSECURITY.COM  
 801 Avenida Acaso, Camarillo, CA 93012  
 [t] 800.413.8783 ■ 805.494.0622 ■ E-mail: service@sdsecurity.com

**TEMPLATE-S6202-SP02**

**Devices covered by this template:**  
**Panic / Fire SVR Exit Device with 02 Dummy Pull Plate**  
**RHR PREP**

THIS SIDE UP FOR RHR DOOR

FOLD HERE  
**CAUTION**  
 DO NOT USE DOOR EDGE

PLACE THIS SIDE ON DOOR  
 PLACE THIS SIDE ON FRAME STOP

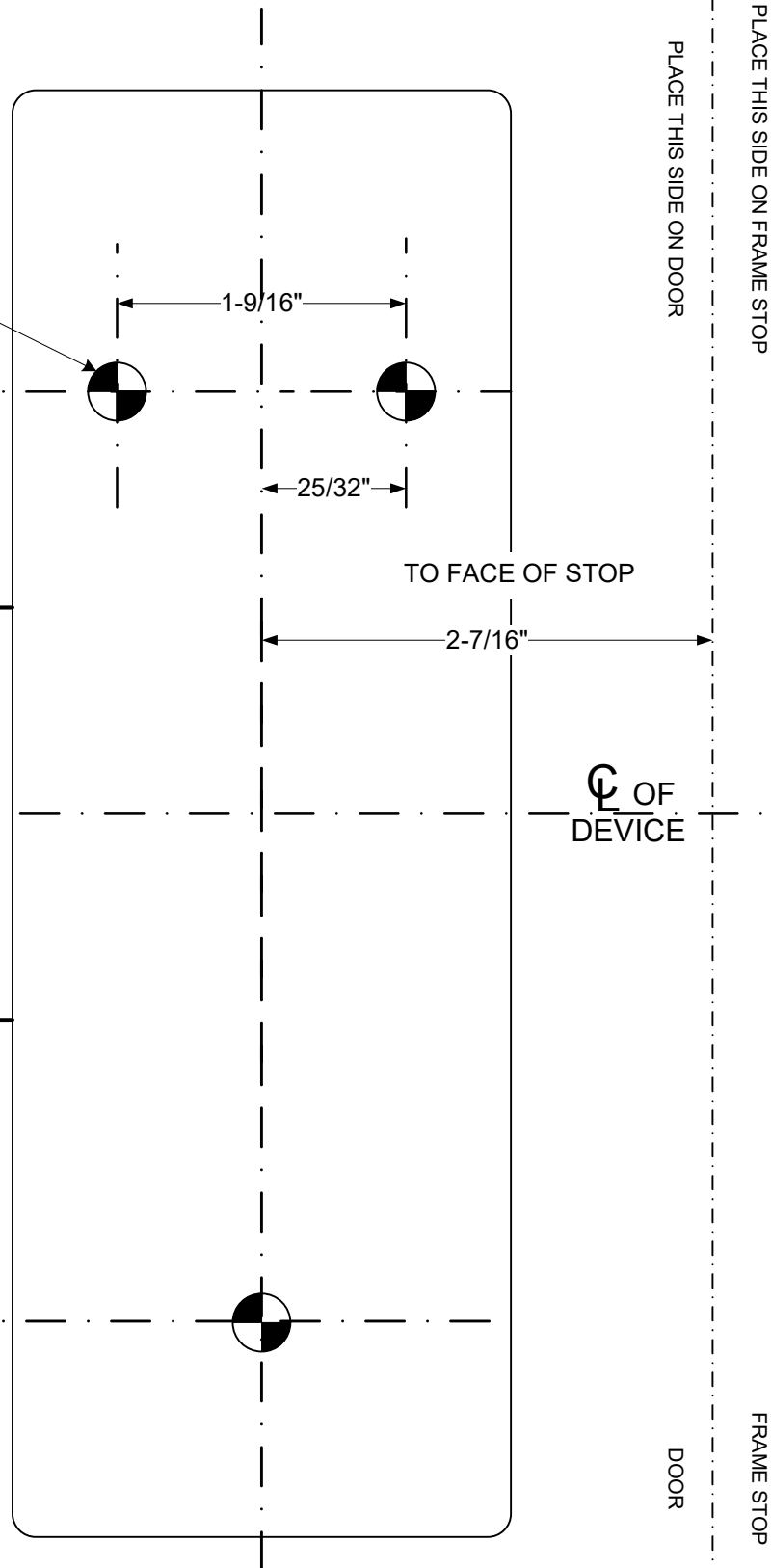
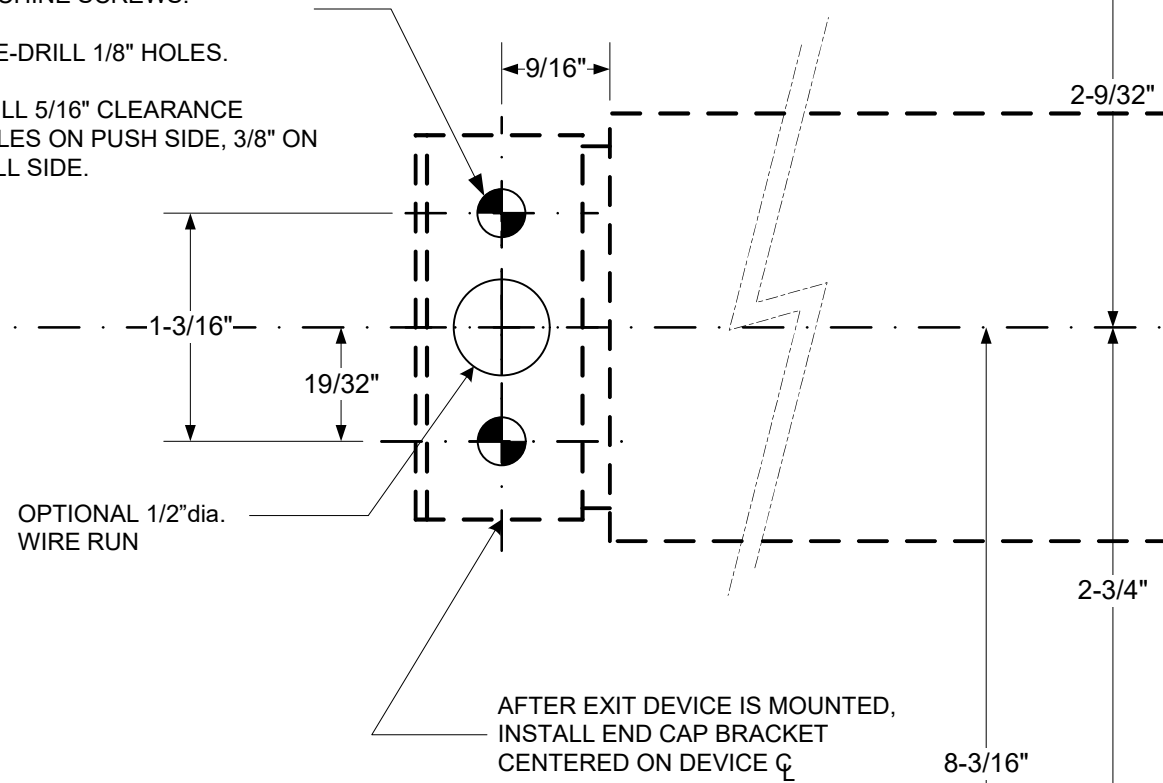
(4x) DEVICE MOUNTING HOLES (4<sup>th</sup> hole shown on Trim Template)  
 TRIM: DRILL 5/16" CLEARANCE HOLES ON PUSH SIDE,  
 15/32" HOLES ON PULL SIDE.

(2x) END CAP BRACKET HOLES

METAL: DRILL / TAP FOR 1/4"-20  
 MACHINE SCREWS.

WOOD: PRE-DRILL 1/8" HOLES.

SEXBOLTS: DRILL 5/16" CLEARANCE  
 HOLES ON PUSH SIDE, 3/8" ON  
 PULL SIDE.



4<sup>th</sup> Hole is off  
 template. Refer  
 to Trim Template  
 for inside and  
 outside install.

40"  
 Watch for special  
 mounting height  
 requirements

FINISHED FLOOR

FOLD HERE

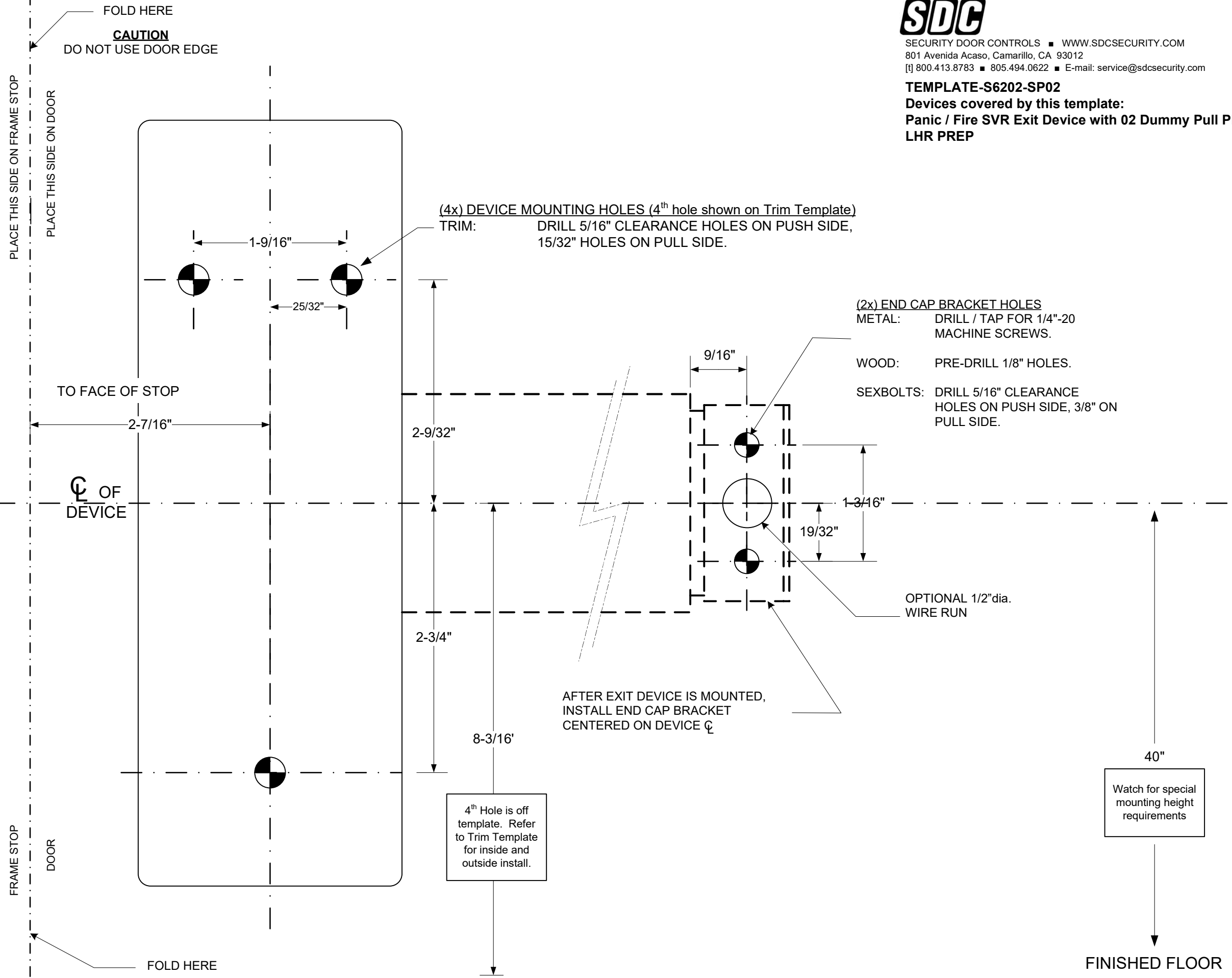
THIS SIDE UP FOR LHR DOOR



SECURITY DOOR CONTROLS ■ WWW.SDCSECURITY.COM  
801 Avenida Acaso, Camarillo, CA 93012  
[t] 800.413.8783 ■ 805.494.0622 ■ E-mail: service@sdsecurity.com

**TEMPLATE-S6202-SP02**

**Devices covered by this template:**  
**Panic / Fire SVR Exit Device with 02 Dummy Pull Plate**  
**LHR PREP**





### TOP LATCH TEMPLATE

#### (3x) Top Strike Holes

METAL: DRILL / TAP FOR 1/4-20  
MACHINE SCREWS

WOOD: 1/8" PILOT DRILL

PLACE THIS SIDE ON  
TOP FRAME.

PLACE THIS SIDE ON  
DOOR SURFACE SIDE

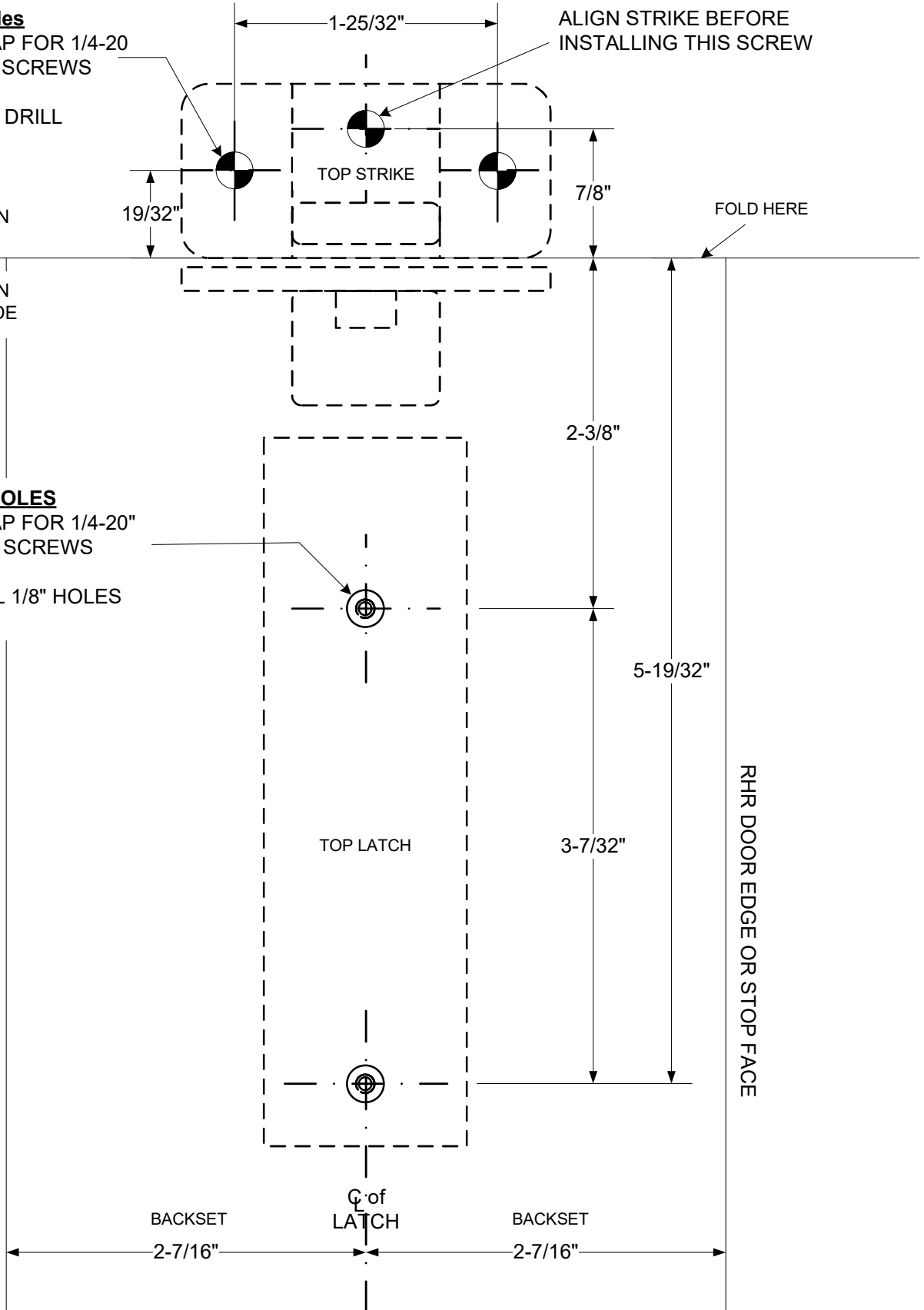
#### (2x) TOP LATCH HOLES

METAL: DRILL / TAP FOR 1/4-20"  
MACHINE SCREWS

WOOD: PRE-DRILL 1/8" HOLES

LHR DOOR EDGE OR STOP FACE

RHR DOOR EDGE OR STOP FACE



CUT HERE TO SEPARATE TOP TEMPLATE AND BOTTOM TEMPLATE

# TEMPLATE

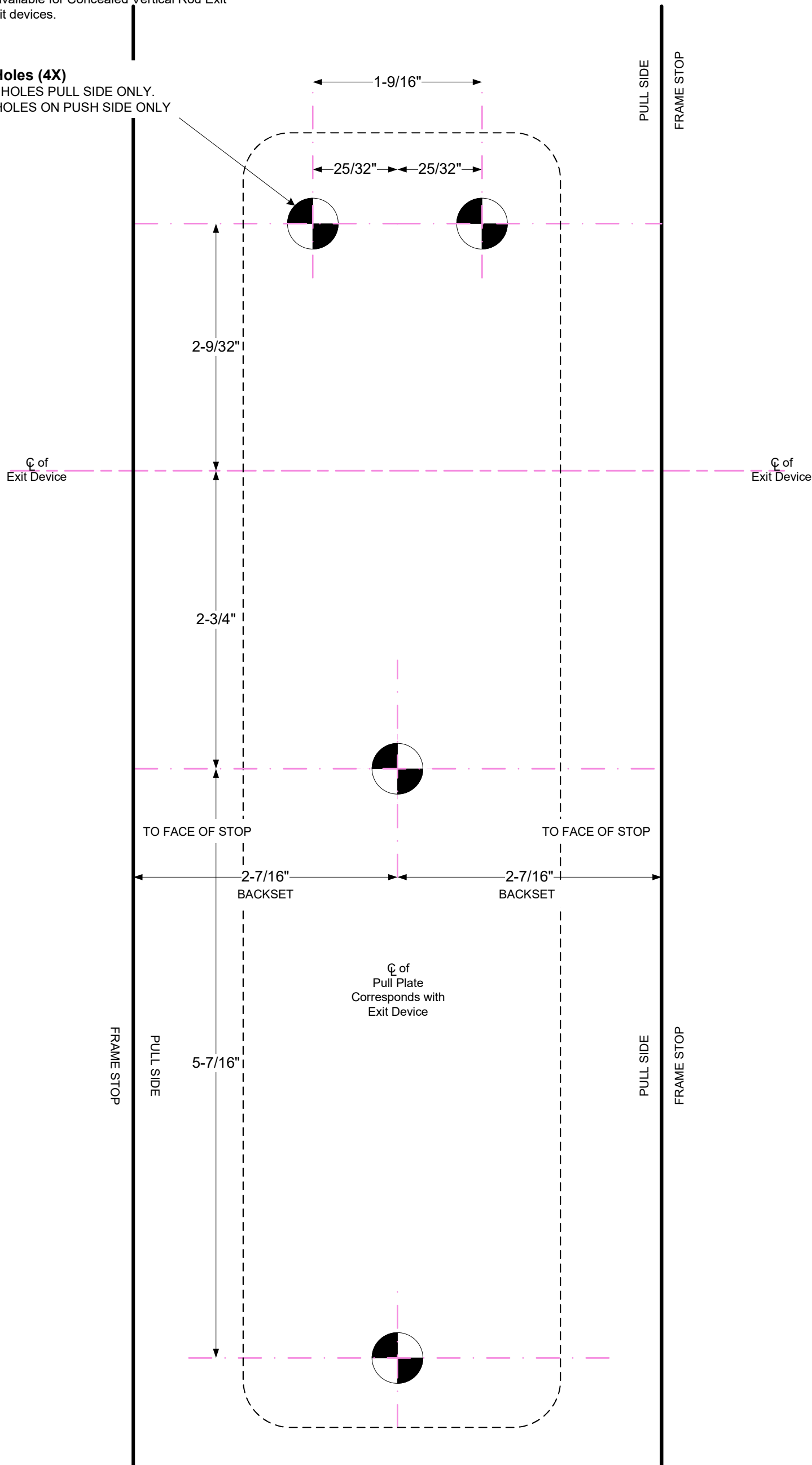
## TEMP-SP02 SATURN ESCUTCHEON 02 DUMMY PULL PLATE

**Note;**

This template is used for Rim Mount and Surface Mount Vertical Rod Devices. It is not available for Concealed Vertical Rod Exit Devices and Mortise exit devices.

**CAUTION**  
DO NOT USE DOOR EDGE

**Mounting Holes (4X)**  
DRILL 15/32" HOLES PULL SIDE ONLY.  
DRILL 5/16" HOLES ON PUSH SIDE ONLY





### BOTTOM LATCH TEMPLATE

(NOT REQUIRED FOR LBR DEVICE)

