

SDC Spacesaver®

1490 / 2490 Series

Narrow Right Angle Electric Bolt Locks



Designed and patented by SDC, Spacesaver® right angle bolt locks represent a fundamental innovation in electric locking technology for access control applications. Spacesaver® bolts project at right angles to the lock mechanism, allowing installation of Spacesaver® locks, by means of a simple mortise cutout, in virtually any standard frame, or in most door lock stiles. With the entire lock concealed, aesthetic acceptability is complete, security is greater and installation in old or new construction is fast, easy and economical.

All Spacesaver® locks are equipped with stainless steel bolts, specification grade solenoids and automatic relock ball switches. Bolts rotate freely, making attempts to tamper or cut extremely difficult. Specification grade solenoids facilitate superior overall performance in both force and longevity, when compared to commercial grade solenoids. Automatic relock ball switches keep the bolt retracted while the door is open. The door depresses the ball switch on closure, causing the bolt to project automatically, locking the door. Additionally, ball switches are field adjustable to compensate for wide door gap and bidirectional to permit use on swinging and sliding doors.

1490AI and 2490AH models are designed to fit in narrow 1½" frame or door stile.

MODELS

1490AI Narrow Right Angle Bolt Lock, Failsafe

2490AH Narrow Right Angle Bolt Lock, Failsecure

STANDARD FEATURES

- Concealed mortise right angle design
- Stainless steel bolt
- Specification grade solenoid
- Automatic relock
- Field adjustable and bidirectional automatic relock ball switch
- Mounting tabs included
- Field selectable dual voltage
- Voltage and current spike protection
- Power regulator included

OPTIONAL FEATURES

- Door position status (DPS)
- Bolt position status (BPS)



APPLICATIONS

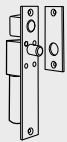
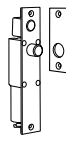
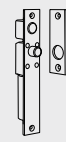
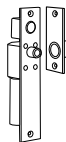
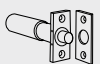
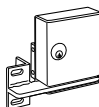


FAILSECURE OPERATION

Bolt retracts when energized. Bolt thrown when de-energized or during a power failure. Recommended for high security applications only. 2490AH models are failsecure.

FAILSAFE OPERATION

Bolt thrown when energized. Bolt retracts when de-energized or during a power failure. Recommended for fire life safety applications. 1490AI models are failsafe.

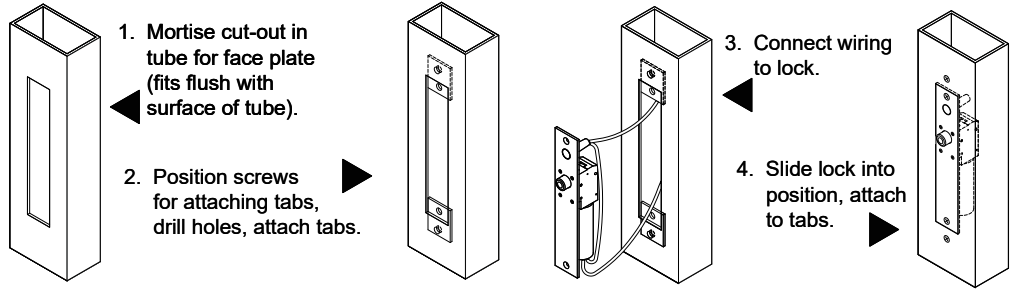
CROSS REFERENCE


Series	1091 / 1291	1190 / 2090	1490 / 2490	FS23M
				
Type	Right Angle	Right Angle	Right Angle	Right Angle
Application	Standard 1¾"	Heavy Duty	Narrow 1½"	Dual Failsafe
Failsafe	1091AI	1190AI	1490AI	FS23MI
Failsecure	1291AH	2090AH	2490AH	-----
	CLICK TO VIEW	CLICK TO VIEW		CLICK TO VIEW
Series	100 / 200	GL	PD2090	290
				
Type	Conventional	Specialty	Specialty	Specialty
Application	Mortise or Surface Mount	Gate Lock	Panic Device Top Latch Release	Micro Cabinet
Failsafe	110I, 160I, 180AI	GL160AI, GL163AI	-----	290
Failsecure	210H, 260H, 280AH	GL260AH, GL263AH, GL260MRAH	PD2090A	290
	CLICK TO VIEW	CLICK TO VIEW	CLICK TO VIEW	CLICK TO VIEW

 SPECIFICATIONS

	1490AI	2490AH
Mount	Mortise	Mortise
Operation	Failsafe	Failsecure
Bolt	5/8" Diameter Solid Stainless Steel	5/8" Diameter Solid Stainless Steel
Bolt Throw	1/2"	1/2"
Faceplate	8" x 1 1/4" x 1/8"	8" x 1 1/4" x 1/8"
Strike	4" x 1 1/2" x 1/8"	4" x 1 1/2" x 1/8"
ID Requirements	8" x 1 1/4" x 1 3/8"	8" x 1 1/4" x 1 3/8"
Weight	2 lbs	2 lbs
Input	12/24 VDC ± 10%	12/24 VDC ± 10%
Current Draw	900 mA @ 12 VDC 450 mA @ 24 VDC	900 mA @ 12 VDC 450 mA @ 24 VDC
Monitoring Contacts	SPDT 4 Amps @ 30 VDC Resistive	SPDT 4 Amps @ 30 VDC Resistive

All Spacesaver locks are easily installed in any existing entrance merely by mortising out a cut-out, attaching the wiring, inserting the lock, and bolting it into position with two attaching tabs. Cutting studs are no longer a problem or expense.



<p>1 SPECIFY MODEL</p> <p>1490AI Narrow Right Angle Bolt Lock, Failsafe</p> <p>2490AH Narrow Right Angle Bolt Lock, Failsecure</p> <p>2 SPECIFY FINSH</p> <p>V 628 Dull Aluminum  Standard</p> <p>Y 335 Dull Black</p> <p>D 606 Dull Brass</p> <p>C 605 Bright Brass</p> <p>G 612 Dull Bronze</p> <p>F 611 Bright Bronze</p> <p>H 613 Dark Oil Rubbed Bronze</p> <p>Q 626 Dull Chrome</p> <p>P 625 Bright Chrome</p> <p>U 630 Dull Stainless</p> <p>S 629 Bright Stainless</p>	<p>3 SPECIFY OPTIONS</p> <p>D Door Position Status (DPS)</p> <p>B Bolt Position Status (BPS)</p>
---	--

STEP NUMBER:	1	2	3
ORDERING EXAMPLE:	1490AI	V	D B

 RELATED PRODUCTS

REPLACEMENT POWER REGULATORS



Power regulators reduce the power consumption of the bolt locks after activation of the lock, allowing for a heat reduction to the bolt lock.

PR-1000 Bolt Lock Power Regulator, 3¾" x 1¼" x ½"