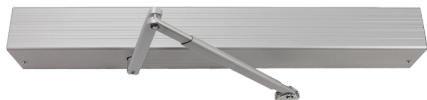


# COMMERCIAL BUILDING ENTRANCE

## ADA Compliant Opening, Single Out Swing Exit Door

- 1** **AUTOMATIC OPERATOR**  
 AUTO1 Low Energy Operator, Push Arm



- 2** **ENTRY CONTROL**  
**CBC482A4U**  
 Bollard with CBC Compliant  
 ADA Push Plates

**Wireless**

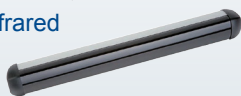
- 400W1433 x 400RC422**  
 Transmitters and Receivers  
 for ADA Push Plate



- 3** **EGRESS CONTROL**  
**482A2U** Wall-Mounted  
 ADA Push Plate



- 4** **PRESENCE SENSOR**  
**AutoIR36** Infrared  
 Obstruction  
 Sensor



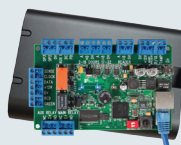
- 5** **POWER SUPPLY**  
**602RF X 12VR**  
**X RB12V4-2**  
 Low Voltage Power  
 Supply with Battery  
 Back Up and ERI,  
 12V and 24V output



- 7** **POWER TRANSFER**  
**PT-3V** Power Transfer  
 Loop



- 8** **ACCESS CONTROL**  
**IPDCE** Network  
 Access control,  
 web browser  
 or software,  
 enclosure,  
 12VDC



- 6** **LOCKING DEVICE**  
**LR100** Retrofit  
 Latch Retraction Kit



- 9** **ACCESS READER**  
**923PW** Narrow Frame  
 Mounted Keypad Prox  
 Reader Wiegand output



- 10** **CREDENTIALS**  
 Cards, Fobs or P-Tags



- 11** **REMOTE CONTROL**  
**WRC-2B x WRC-R2**  
 Hand-held Wirelsss  
 Transmitter  
 and Receiver



- 12** **VISUAL INDICATOR**  
**EA100** Visual Door Status Sensor

